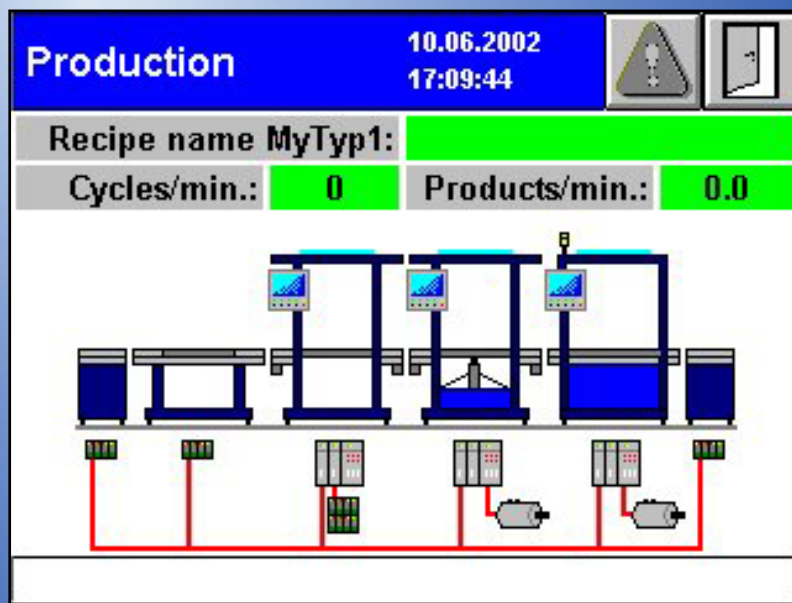


EPAM™

Easy PageMachine (EPAM)



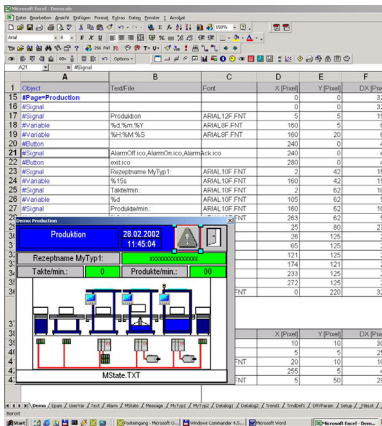
- full graphics 320*240 up to 1280*1024
- Online selection for different languages also Unicode
- Ethernet-communication for CoDeSys (ELAU, Wago, Parker), K&W, AT-S7, UDP (ASCII), MPI
- Runtime for WindowsCE™ (x86 & ARM) and WindowsXP(e)™
- Alarmhandling and Diagnose
- Password and Recipehandling
- RemoteControl
- Online selection for different measures

The visualization tool Easy PageMachine (EPAM) is specially designed for **graphical user interfaces with touch** and allows a **very easy definition** of the visualization without complex programming. Objects like button, switch, alphanumeric variable, bargraph, message, bitmaps and so on are available to build up the different pages. This objects will be defined within **EXCEL**, linked with PLC-variables and than put together to a complete page. Different pages can be connected through „links“ and i.e. a button-object can call the page by simply „clicking“ on it.

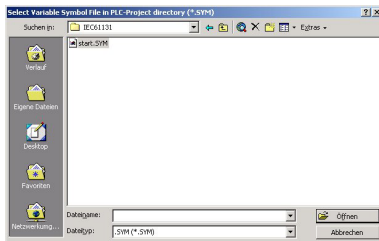
Thanks to the transparent dataformat the project documentation is automatically included.

An interpreter allows online-testing of the application on the development PC. Hereby visualization can be performed with mouse. Changes can be done within seconds and the result is visible immediately on the development PC. Finally, the tested application can be loaded to the target system.

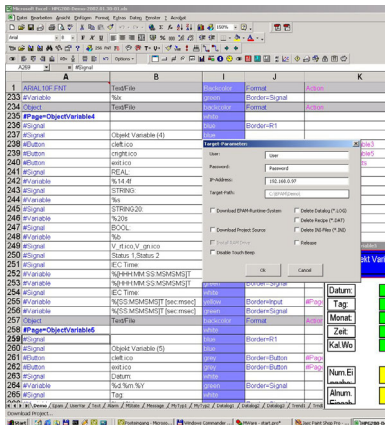
1. Object definition in EXCEL



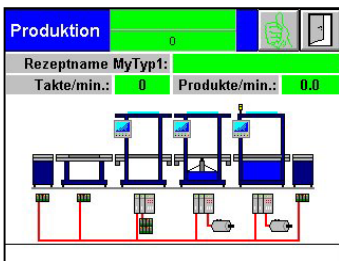
2. Variable-Import



3. Project-download



4. Ready



Technical Data

Graphics	
Type	full graphics
Resolution	320x240 up to 1280x1024
Number of colours	256 (8Bit), 64k WinCE, TrueColor (24Bit) WindowsXP
Input device	
Type	Mouse or Touch
Fonts	
Type	True Type Fonts, Unicode-Support
Communication	
Ethernet (TCP/IP)	CoDeSys V2.3, ELAU, Wago, Parker, K&W, AT-S7, UDP; CoDeSys V3 (PLC-Handler)
S7	TCP/IP or MPI
OPC-Client and others	on request
Operating systems	
WindowsCE™	5.0,6 .0, Pocket PC 2003 (iPAQ)
Windows	2000/XP(e)/Vista/7
Objects	
Page	Dimension of the screen, border, background image
Button	Mouse-/touch active area
RadioButton	Mouse-/touch active area for selection
Switch	Mouse-/touch active area with multiple Selection (e.g. on/off)
DropDownList	Mouse-/touch active area for list selection
Variable	In-/output of variables with different data formats byte, word, doubleword, real with or without sign, string and time
Bar	Display of variable values as bargraph
Textlist	Display of ASCII-textfiles as a scroll-list (i.e. Help) with formatted flowtext bold, italic, underline
Alarm	Alarmhandling
Alarmlist	Display of alarms in a list
Signal	display of values as text or image (only output)
Recipe	Recipe handling
Password	Password handling
ScreenSaver	Screensaver
ScrollList	Display of objects in a scroll list
RemoteControl	Remote control of other HMIs within a network (like PC-Anywhere)
DataLog	Logging of variable values in a logfile
Trend	Display of Logdata as trend
HTML-Browser	Display of HTML-pages
General facts	
Variables	Symbolic variable names, dynamic Variable addressing
Variable import	via symbol file from PLC, AWL Import for S7
Communication	local and remote via Ethernet (TCP/IP)
Datatypes	all IEC-61131 Datatypes inkl. REAL, STRING, TIME und DT (Date)
Ordering information	
EPAM-CD	5056541
WinEPAM Runtime Licence Standard PC	5056759
WinEPAM Runtime Licence IPC	5056756
EPAM Runtime Licence PocketPC	5056815