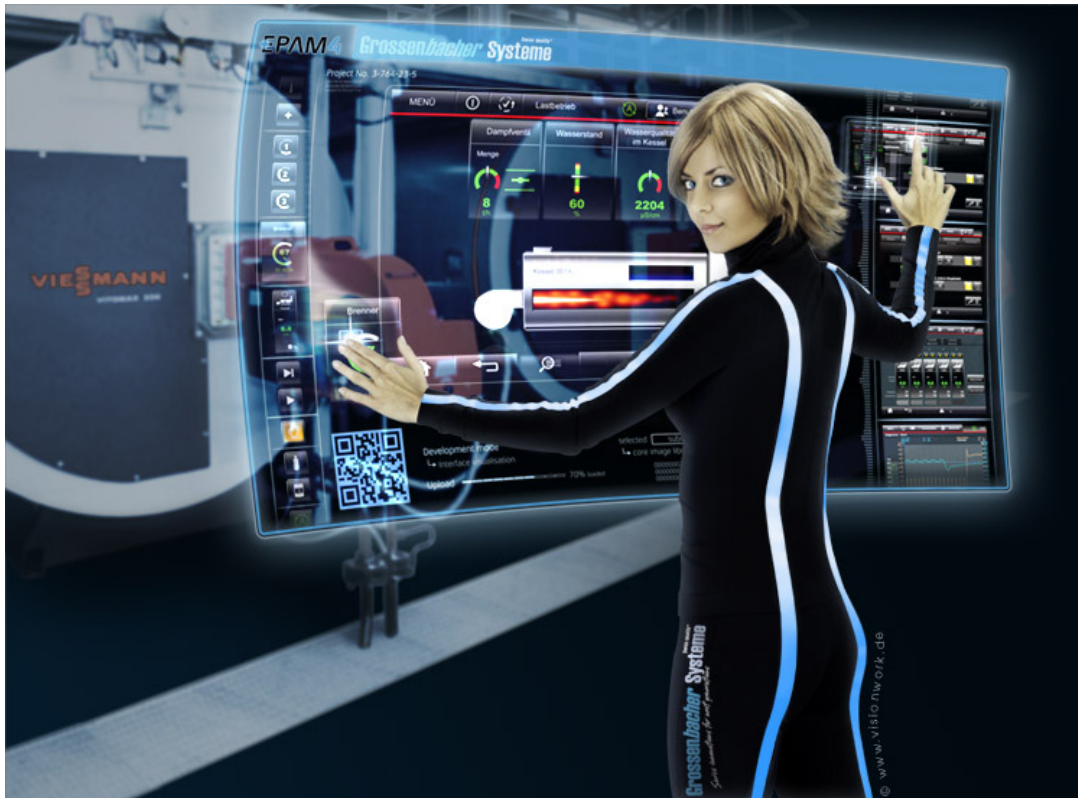


EPAM

Easy PageMachine EPAM4



- **full graphics & True colour (24Bit)**
- **Online selection for different languages also Unicode**
- **Platform independent Runtime for Windows, Linux and MacOS**
- **Faster project development thanks to reusable templates and libraries**
- **incremental compilation and download of projects**
- **Central user/password handling with LDAP-Server (Windows)**
- **JPG, BMP, GIF, PNG, PCX, SVG images**
- **Dynamic objects**

The new, 4. generation of the Visualization tool **Easy PageMachine (EPAM4)** has been completely redesigned to fulfil the requirements for the next 10 years.

Development focuses on customer needs and their requirements for faster project development cycles. For that functions like templates, libraries, group objects – which may consist of any combination of single objects, incremental compilation and download of projects, etc. has been implemented. So projects and parts of it can be reused in a better way, which results in clear reduction of project development time and costs.

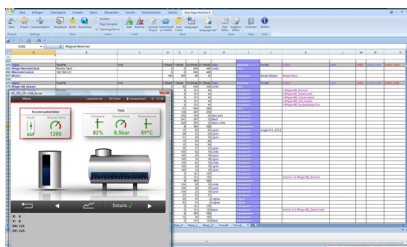
The EPAM4 runtime-system is based on the platform independent Qt-Library and is so executable on Windows, Linux and Mac-OS systems! This secures the future for the customer's investments.

The consistent object oriented implementation is the basis for more functionality within shorter time! The user also benefits of the full Unicode support which makes handling of international languages much easier, the simpler image generation with up to 24Bits colour depth and the possibility to use the common image formats JPG, BMP, GIF, PNG, PCX, SVG... etc.

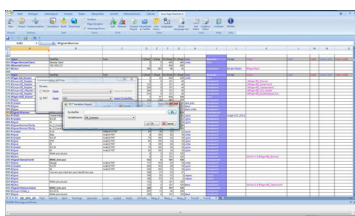
The approved basis of all this new features is still the development environment EXCEL!

Technical Data

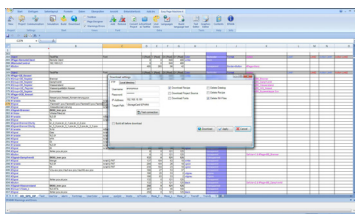
1.Object definition in EXCEL



2. Variable-Import



3. Project-download



4. Ready!



Graphics	
Type	full graphics
Resolution	320x240 up to 1600x1200
Number of colours	TrueColor (24Bit)
Input device	
Type	Mouse or Touch
Fonts	
Type	True Type Fonts, Unicode-Support
Communication	
Ethernet (TCP/IP)	CoDeSys, ELAU, Wago, Parker, AT-S7, UDP
S7	TCP/IP
OPC-Client and others	on request
Operating systems	
WindowsCE™	6.0, x86 and ARM
Windows	XP(e)/Vista/7
Objects	
Page	Dimension of the screen, border, background image
Button	Mouse-/touch active area
RadioButton	Mouse-/touch active area for selection
Switch	Mouse-/touch active area with multiple Selection (e.g. on/off)
DropDownList	Mouse-/touch active area for list selection
Variable	In-/output of variables with different data formats byte, word, doubleword, real with or without sign, string and time
Bar	Display of variable values as bargraph
Textlist	Display of ASCII-textfiles as a scroll-list (i.e. Help) with formatted flowtext bold, italic, underline
Alarm	Alarmhandling
Alarmlist	Display of alarms in a list
Signal	display of values as text or image (only output)
Recipe	Recipe handling
Password	Password handling
ScreenSaver	Screensaver
ScrollList	Display of objects in a scroll list
RemoteControl	Remote control of other HMIs within a network (like PC-Anywhere)
DataLog	Logging of variable values in a logfile
Trend	Display of Logdata as trend
WebView	Display of HTML-pages
Group	Userdefined combination of standard-EPAM objects
Meter/VMeter	Display of values as meter
General facts	
Variables	Symbolic variable names, dynamic Variable addressing
Variable import	via symbol file from PLC
Communication	local and remote via Ethernet (TCP/IP)
Datatypes	all IEC-61131 Datatypes inkl. REAL, STRING, TIME und DT (Date)
Ordering information	
EPAM-IDE	5055095